

Student Evaluation of Instruction and Course

University of Missouri-Columbia

Form B - 3

Instructor: Howland, Jane L

Semester: Summer 2010

Course Subject: IS_LT

Section: 01

Catalog Number: 7361

Course Id: 007611

Description: INTRO TO DIGITAL MEDIA

Class Number: 14693

Department or Unit: MU-D IS_LT

Number of Respondents: 14

	Percent Responding						
Section I Consumer Information	SA 4	A 3	D 2	SD 1	# Resp.	Mean	
1. Course content and expectations were presented clearly	35.7	42.9	14.3	7.1	14	3.1	
2. The instructor was interested in student learning	35.7	50.0	0.0	14.3	14	3.1	
3. All things considered, the instructor taught effectively	21.4	57.1	7.1	14.3	14	2.9	
Section II Diagnostic Feedback	High 5	4	3	2	Low 1	# Resp.	Mean
1. Instructor's organization of the course	35.7	7.1	28.6	14.3	14.3	14	3.4
2. Sequential presentation of concepts	57.1	21.4	7.1	14.3	0.0	14	4.2
3. Instructor's explanations	35.7	28.6	28.6	7.1	0.0	14	3.9
4. Ability to present alternative explanations	40.0	20.0	30.0	0.0	10.0	10	3.8
5. Use of examples and illustrations	46.2	7.7	46.2	0.0	0.0	13	4.0
6. Instructor's enhancement of student interest	28.6	35.7	28.6	0.0	7.1	14	3.8
7. Student confidence in instructor's knowledge	57.1	28.6	7.1	0.0	7.1	14	4.3
8. Instructor's enthusiasm	64.3	14.3	7.1	7.1	7.1	14	4.2
9. Clarity of course objectives	57.1	21.4	14.3	0.0	7.1	14	4.2
10. Interest level of class sessions	38.5	38.5	15.4	0.0	7.7	13	4.0
11. Availability of extra help when needed	64.3	7.1	21.4	0.0	7.1	14	4.2
12. Instructor's language proficiency	76.9	15.4	7.7	0.0	0.0	13	4.7
13. Instructor's use of technology	64.3	7.1	14.3	0.0	14.3	14	4.1
Section III General Evaluation	E	QG	S	F	P	# Resp.	Mean
1. The course as a whole	21.4	28.6	42.9	0.0	7.1	14	3.6
2. The content of the course	28.6	35.7	21.4	7.1	7.1	14	3.7
Section IV Information for Other Students	E	QG	S	F	P	# Resp.	Mean
1. Use of class time	50.0	25.0	16.7	0.0	8.3	12	4.1
2. Amount you learned in the course	38.5	15.4	46.2	0.0	0.0	13	3.9
3. Relevance and usefulness of course content	50.0	28.6	14.3	7.1	0.0	14	4.2
4. Evaluative and grading techniques (tests,papers,projects)	42.9	28.6	7.1	14.3	7.1	14	3.9
5. Reasonableness of assigned work	42.9	28.6	14.3	14.3	0.0	14	4.0
6. Clarity of student responsibilities and requirements	28.6	35.7	21.4	0.0	14.3	14	3.6

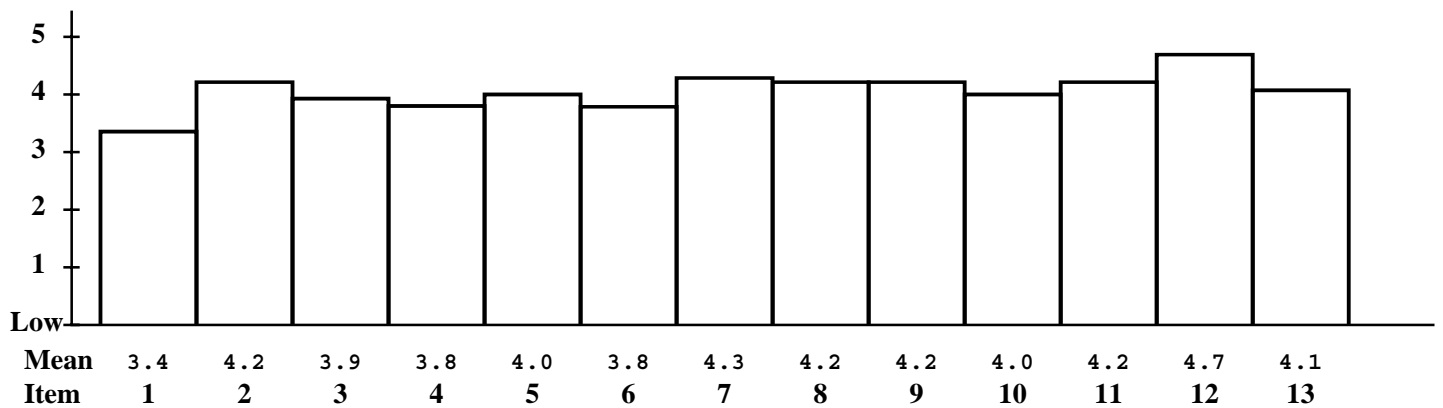
Section V General Information About Your Students (percent of respondents)										% Completed Assigned Work	
Wanted Course		Course Is		Class		Expected Grade		% Attendance			
Yes	71.4	In major	57.1	Freshman	0.0	A	100.0	0-25	0.0	0-25	0.0
No	7.1	In minor	0.0	Sophomore	0.0	B	0.0	26-50	0.0	26-50	0.0
Neutral	21.4	Elective	28.6	Junior	0.0	C	0.0	51-75	0.0	51-75	0.0
Omit	0.0	General	0.0	Senior	0.0	D	0.0	76-90	0.0	76-90	0.0
		Other	14.3	Graduate	92.9	F	0.0	91-100	21.4	91-100	50.0
		Omit	0.0	Other	7.1	S	0.0	NA	78.6	NA	50.0
				Omit	0.0	U	0.0	Omit	0.0	Omit	0.0
						Omit	0.0				

Section VI Optional Items		E	QG	S	F	P	# Resp.	Mean
E = Excellent	1.	0.0	0.0	0.0	0.0	0.0	0	0.0
QS = Quite Good	2.	0.0	0.0	0.0	0.0	0.0	0	0.0
S = Satisfactory	3.	0.0	0.0	0.0	0.0	0.0	0	0.0
F = Fair	4.	0.0	0.0	0.0	0.0	0.0	0	0.0
P = Poor								

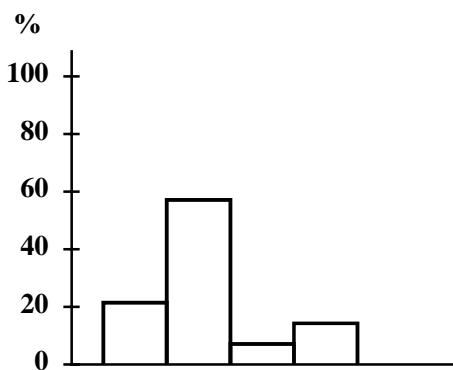
	1	2	3	4	5	6	7	8	9	# Resp.	Mean
5.	0.0	0.0	0.0	0.0	0.0	0.0	0.0	0.0	0.0	0	0.0
6.	0.0	0.0	0.0	0.0	0.0	0.0	0.0	0.0	0.0	0	0.0
7.	0.0	0.0	0.0	0.0	0.0	0.0	0.0	0.0	0.0	0	0.0
8.	0.0	0.0	0.0	0.0	0.0	0.0	0.0	0.0	0.0	0	0.0

Section II Graphic Representation of Means of Items in Section II

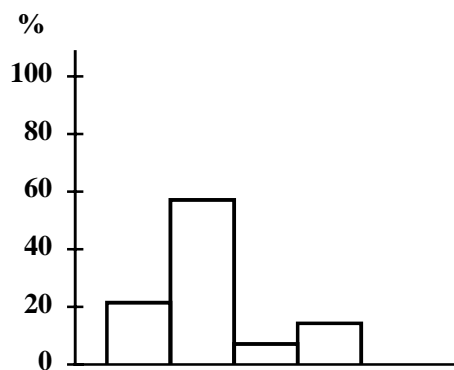
High



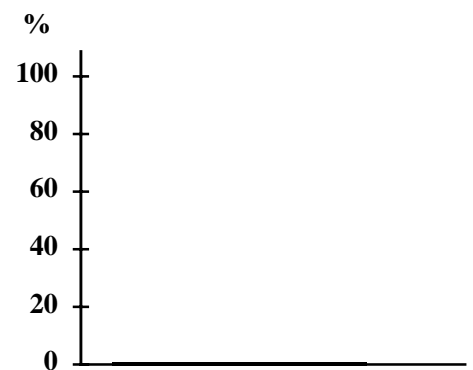
Section I Consumer Information Item 3: Overall Teaching Effectiveness



All Respondents: 14



Respondents Expecting "A": 14



Respondents Expecting "C": 0

FOR HELP WITH INTERPRETATION, CONTACT THE OFFICE OF PROGRAM FOR EXCELLENCE IN TEACHING. PHONE: 882-6260

PROCESSED AT THE ASSESSMENT RESOURCE CENTER